




CASE 110EX-D ROLLER

Minor Service

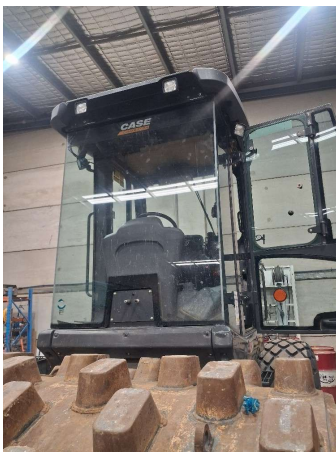
● 6 ● 14 ● 62 ● 25

Inspection Number	RP056835	Customer No	200000
Serial Number	HRKT08637	Customer Name	AUSTRALIAN HAMMER SUPPLIES HIRE
Make	CASE	Customer Email	
Model	1110EX-D (PAD)	Works Order	RP056835
Equipment Family	ROLLER	Completed On	5/03/2026 7:45:26 AM
Asset ID	AHSH231	Inspector	Collin Graham
Location	AUSTRALIAN HAMMER SUPPLIES HIRE Unit 3/32 WILLIAMSON RD INGLEBURN 2565	PDF Generated On	05/03/2026
		Machine Hours	243
Customer		Next Meter	500

General Info & Comments

● **General Info/Comments**

250hr service



TASK SAFETY INSTRUCTIONS

- | | |
|--|------|
| ● 1.1 Wear Correct PPE at all times | PASS |
| ● 1.2 All isolation and safe work procedures must be followed | PASS |
| ● 1.3 Identify task hazards and controls utilising hierarchy or controls model | PASS |
| ● 1.4 Ensure a competent operator and spotter is utilised to move mobile equipment | PASS |
| ● 1.5 Ensure all mobile equipment is fundamentally stable | PASS |
| ● 1.6 Ensure three points of contact is maintained during access and egress | PASS |
| ● 1.7 Ensure acceptable housekeeping standards are maintained at all times | PASS |

MACHINE GENERAL RUNNINGCHECKS

● 2.1 Check all work lights, beacon & reverse alarm for operation	PASS
● 2.2 Test all dash warning lights, gauges and audible alarms for correct operation	PASS
● 2.3 Check idle timer for correct shut down operation	PASS
● 2.4 Check operation of all three emergency stop buttons	PASS
● 2.5 Check operation of horn	PASS
● 2.6 Check operation of reverse camera	PASS
● 2.7 Check alternator charge voltage	PASS
● 2.8 Check operation of auto grease system by manually activating timer	N/A
● 2.9 Check fire system control panel for 'Normal'	N/A

PM FIRE SUPPRESSION SYSTEM

● 5.1 Ensure fire suppression bottle and components are securely mounted and in good condition	N/A
● 5.2 Ensure fire suppression is correctly charged	N/A
● 5.3 Inspect last charge date	DATE:2026-03-05T00:00:00.000000
● 5.4 Check all fire extinguishers are securely mounted and in good condition	PASS
● 5.5 Check all fire extinguishers are correctly charged	PASS
● 5.6 Inspect last charge date	DATE:2026-03-05T00:00:00.000000

PM ENGINE

● 6.1 Perform engine valve set	N/A
● 6.2 Inspect air intake system hoses, pipes, clamps for signs of dirt ingress	PASS
● 6.3 Inspect engine for oil or fuel leaks	PASS
● 6.4 Inspect engine components for missing clamps	PASS

● 6.5 Inspect exhaust system for signs of leaks, loose bolts or missing clamps	PASS
● 6.6 Inspect turbo for security and signs of leaks	PASS
● 6.7 Inspect condition of exhaust lagging	PASS
● 6.8 Inspect engine mounts for condition and loose hardware	PASS
● 6.9 Inspect alternator mount condition and adjustment	PASS
● 6.10 Inspect wiring condition and security	PASS
● 6.11 Inspect engine belts	PASS

PM ENGINE COOLING SYSTEM

● 7.1 Check coolant level	PASS
● 7.2 Check condition of radiator cap	PASS
● 7.3 Check condition of radiator core	PASS
● 7.4 Check cooling system for signs of leaks	PASS
● 7.5 Check hose and clamp condition	PASS
● 7.6 Inspect fan condition and operation	PASS
● 7.7 Inspect radiator and fan guard condition	PASS

PM SWING TRANSMISSION

● 8.1 Inspect swing transmission for signs of leaks	N/A
● 8.2 Inspect swing transmission oil level	N/A

PM HYDRAULIC SYSTEM

● 9.1 Check hydraulic oil level	PASS
● 9.2 Inspect hydraulic cylinders for leaks and security	PASS
● 9.3 Inspect hydraulic hoses for leaks, damage, security	PASS
● 9.4 Inspect hydraulic pump condition, leaks, security	PASS

● 9.5 Check Pilot Accumulator operation as per OEM Maintenance Procedure - Test Boom Down Functionality with engine off PASS

PM FINAL DRIVES

● 10.1 Inspect LHS final drive mount condition for leaks and security PASS

● 10.2 Inspect LHS oil level and mag plug condition PASS

● 10.3 Inspect RHS final drive mount condition for leaks and security PASS

● 10.4 Inspect RHS oil level and mag plug condition PASS

PM UNDERCARRIAGE

● 11.1 Inspect LHS track tension N/A

● 11.2 Inspect RHS track tension N/A

● 11.3 Inspect tracks for loose/missing bolts N/A

● 11.4 Inspect load and carrier rollers for signs of leaks N/A

● 11.5 Inspect idlers for signs of leaks N/A

● 11.6 Inspect sprocket segments condition N/A

● 11.7 Inspect track frame for cracks, lose or missing hardware N/A

PM FRAME AND BODY

● 12.1 Check panels for damage and security FAIL

● 12.2 Check access steps and walkway condition PASS

● 12.3 Inspect boom condition – cracks, missing clamps, damaged pipes, excessive movement, lubrication N/A

● 12.4 Inspect stick condition – cracks, missing clamps, damaged pipes, excessive movement, lubrication N/A

● 12.5 Inspect quick hitch condition and operation N/A

● 12.6 Inspect bucket condition – cracks, wear, damage, mounts N/A

● 12.7 Inspect GET condition and hardware FAIL

PM ELECTRICAL SYSTEM

<input checked="" type="radio"/>	13.1 Check battery condition	PASS
<input checked="" type="radio"/>	13.2 Check battery terminal condition	PASS
<input checked="" type="radio"/>	13.3 Check battery security	PASS
<input checked="" type="radio"/>	13.4 Check battery box drain is clear	PASS
<input checked="" type="radio"/>	13.5 Check wiring condition and security	PASS

PM GREASE SYSTEM

<input checked="" type="radio"/>	14.1 Check all points for acceptable lubrication	PASS
<input checked="" type="radio"/>	14.2 Inspect grease system operation	PASS
<input checked="" type="radio"/>	14.3 Check grease line condition	PASS
<input type="radio"/>	14.4 Refill grease tank	N/A
<input type="radio"/>	14.5 Lubricate bucket linkage	N/A
<input type="radio"/>	14.6 Lubricate blade linkage	N/A
<input type="radio"/>	14.7 Lubricate boom & stick linkage	N/A
<input type="radio"/>	14.8 Lubricate swing bearing	N/A

PM OPERATOR STATION

<input checked="" type="radio"/>	15.1 Check all doors for correct opening and closing adjustments and operation	PASS
<input checked="" type="radio"/>	15.2 Inspect condition of door seals	PASS
<input type="radio"/>	15.3 Check window glass and seal condition	FAIL
<input checked="" type="radio"/>	15.4 Check mirror condition and adjustments	PASS
<input checked="" type="radio"/>	15.5 Fill window washer reservoir	PASS
<input checked="" type="radio"/>	15.6 Inspect air con vents condition	PASS
<input checked="" type="radio"/>	15.7 Inspect seat belt and mounting hardware	PASS

● 15.8 Inspect seat condition, operation and mounting PASS

● 15.9 Replace cabin A/C filter PASS

OIL SAMPLING

● 16.1 Engine FAIL

PM POST SERVICE INSPECTION CHECKS

● 17.1 All inspections have been completed and rectified as required PASS

● 17.2 All safety related defects have been repaired or reported FAIL

● 17.3 All defects have been noted and reported MONITOR

● 17.4 All fluids are at correct level and drain plugs tight PASS

● 17.5 All oil samples have visually been inspected and any notable signs of contamination have been reported PASS

● 17.6 All replaced filters have been cut and inspected and photos added to CAT Inspect and reported to supervisor N/A

● 17.7 Machine has been recommissioned and ready for operation FAIL

● 17.8 PM service notification marked off in Vision Link N/A

DEFECTS IDENTIFIED

● 18.1 DEFECTS IDENTIFIED *windscreen cracked, fuel system contamination and rust in fuel tank. machine to go to dealer for warranty repairs*

OIL USED

● 19.1 Hydraulic oil 0

● 19.2 Engine oil 15

● 19.3 Slew oil 0

● 19.4 Gear oil 0

● 19.5 Coolant 0

● Site photo

● Site photo

● Site photo

● Site photo